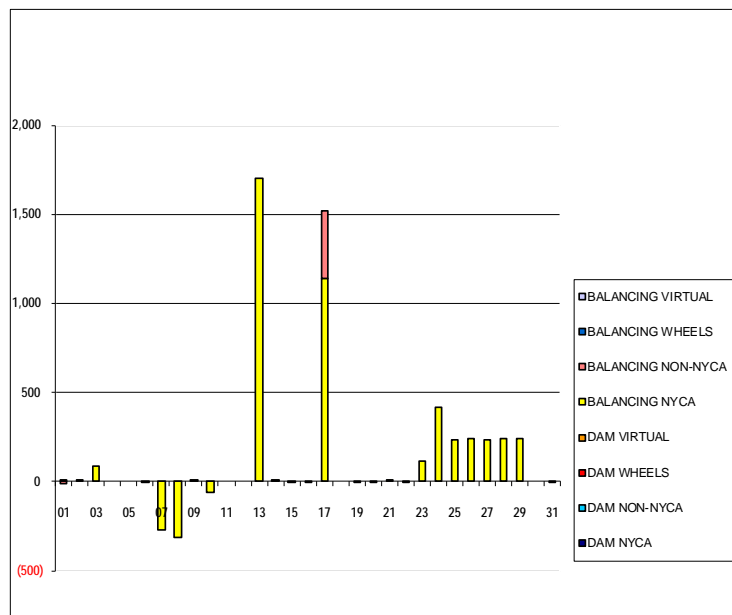


SETTLEMENTS REPORT  
December 2021 Settlement Adjustment  
January 10, 2022

Initial – Market Supply Delta Analysis

	MONDAY	TUESDAY	WEDNESDAY	THURSDAY	FRIDAY	SATURDAY	SUNDAY
			1	2	3	4	5
DAM NYCA			0	0	0	0	0
DAM NON-NYCA			0	0	0	0	0
DAM WHEELS			0	0	0	0	0
DAM VIRTUAL			0	0	0	0	0
BALANCING NYCA			0	0	85	0	0
BALANCING NON-NYCA			(13)	0	0	0	0
BALANCING WHEELS			0	0	0	0	0
BALANCING VIRTUAL			0	0	0	0	0
	6	7	8	9	10	11	12
DAM NYCA	0	0	0	0	0	0	0
DAM NON-NYCA	0	0	0	0	0	0	0
DAM WHEELS	0	0	0	0	0	0	0
DAM VIRTUAL	0	0	0	0	0	0	0
BALANCING NYCA	(7)	(275)	(313)	1	(63)	0	0
BALANCING NON-NYCA	0	0	0	0	0	0	0
BALANCING WHEELS	0	0	0	0	0	0	0
BALANCING VIRTUAL	0	0	0	0	0	0	0
	13	14	15	16	17	18	19
DAM NYCA	0	0	0	0	0	0	0
DAM NON-NYCA	0	0	0	0	0	0	0
DAM WHEELS	0	0	0	0	0	0	0
DAM VIRTUAL	0	0	0	0	0	0	0
BALANCING NYCA	1,699	1	(2)	(7)	1,143	0	(0)
BALANCING NON-NYCA	0	0	0	0	378	0	0
BALANCING WHEELS	0	0	0	0	0	0	0
BALANCING VIRTUAL	0	0	0	0	0	0	0
	20	21	22	23	24	25	26
DAM NYCA	0	0	0	0	0	0	0
DAM NON-NYCA	0	0	0	0	0	0	0
DAM WHEELS	0	0	0	0	0	0	0
DAM VIRTUAL	0	0	0	0	0	0	0
BALANCING NYCA	(0)	10	(0)	115	415	236	237
BALANCING NON-NYCA	0	0	0	0	0	0	0
BALANCING WHEELS	0	0	0	0	0	0	0
BALANCING VIRTUAL	0	0	0	0	0	0	0
	27	28	29	30	31		
DAM NYCA	0	0	0	0	0		
DAM NON-NYCA	0	0	0	0	0		
DAM WHEELS	0	0	0	0	0		
DAM VIRTUAL	0	0	0	0	0		
BALANCING NYCA	231	239	241	0	(2)		
BALANCING NON-NYCA	0	0	0	0	0		
BALANCING WHEELS	0	0	0	0	0		
BALANCING VIRTUAL	0	0	0	0	0		



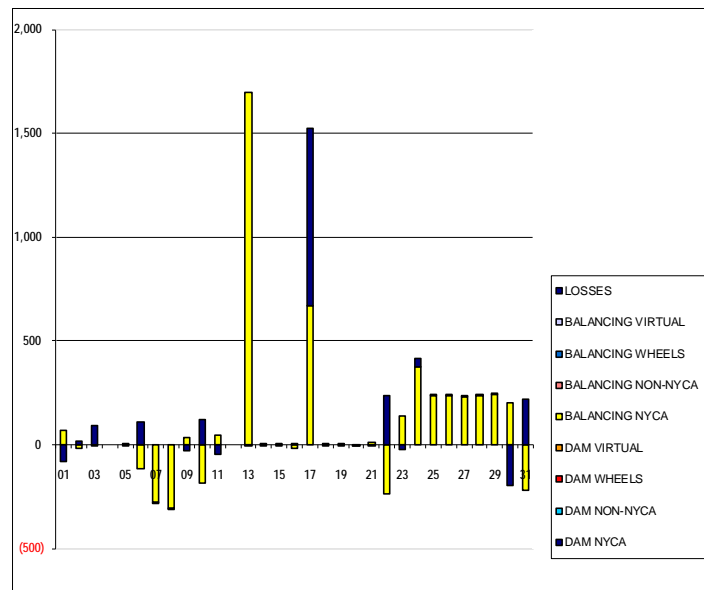
# SETTLEMENTS REPORT

## December 2021 Settlement Adjustment

### January 10, 2022

#### Initial – Market Withdrawals Delta Analysis

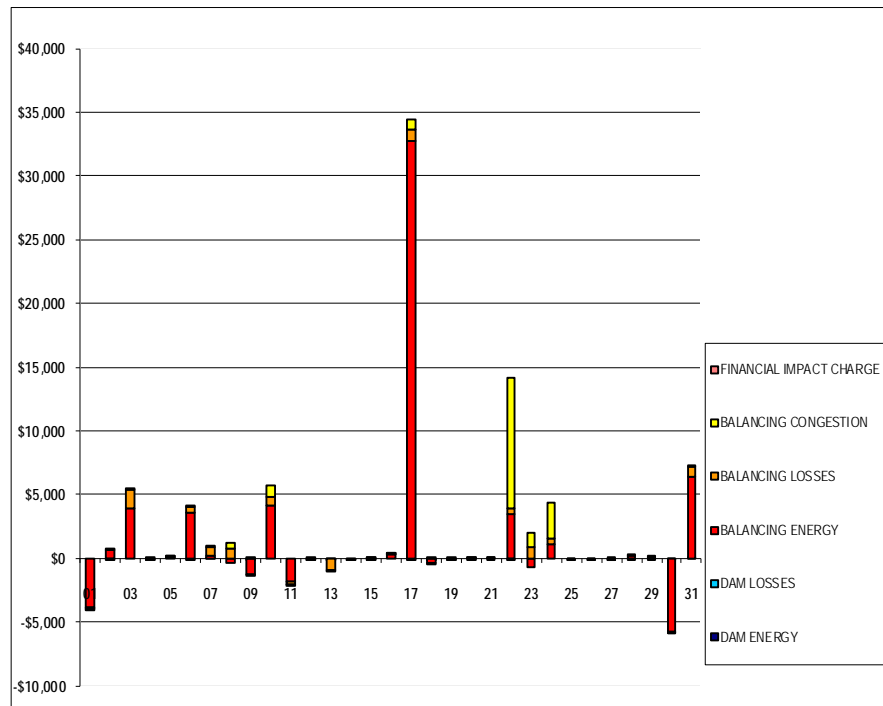
	MONDAY	TUESDAY	WEDNESDAY	THURSDAY	FRIDAY	SATURDAY	SUNDAY
			1	2	3	4	5
DAM NYCA			0	0	0	0	0
DAM NON-NYCA			0	0	0	0	0
DAM WHEELS			0	0	0	0	0
DAM VIRTUAL			0	0	0	0	0
BALANCING NYCA			68	(18)	(6)	0	(1)
BALANCING NON-NYCA			0	0	0	0	0
BALANCING WHEELS			0	0	0	0	0
BALANCING VIRTUAL			0	0	0	0	0
UFE/LOSSES			(81)	18	90	0	1
	6	7	8	9	10	11	12
DAM NYCA	0	0	0	0	0	0	0
DAM NON-NYCA	0	0	0	0	0	0	0
DAM WHEELS	0	0	0	0	0	0	0
DAM VIRTUAL	0	0	0	0	0	0	0
BALANCING NYCA	(115)	(275)	(308)	33	(183)	44	0
BALANCING NON-NYCA	0	0	0	0	0	0	0
BALANCING WHEELS	0	0	0	0	0	0	0
BALANCING VIRTUAL	0	0	0	0	0	0	0
UFE/LOSSES	108	(0)	(5)	(32)	121	(44)	0
	13	14	15	16	17	18	19
DAM NYCA	0	0	0	0	0	0	0
DAM NON-NYCA	0	0	0	0	0	0	0
DAM WHEELS	0	0	0	0	0	0	0
DAM VIRTUAL	0	0	0	0	0	0	0
BALANCING NYCA	1,699	1	(2)	(15)	670	5	(0)
BALANCING NON-NYCA	0	0	0	0	0	0	0
BALANCING WHEELS	0	0	0	0	0	0	0
BALANCING VIRTUAL	0	0	0	0	0	0	0
UFE/LOSSES	(0)	(0)	0	8	851	(5)	0
	20	21	22	23	24	25	26
DAM NYCA	0	0	0	0	0	0	0
DAM NON-NYCA	0	0	0	0	0	0	0
DAM WHEELS	0	0	0	0	0	0	0
DAM VIRTUAL	0	0	0	0	0	0	0
BALANCING NYCA	(0)	10	(238)	139	376	236	237
BALANCING NON-NYCA	0	0	0	0	0	0	0
BALANCING WHEELS	0	0	0	0	0	0	0
BALANCING VIRTUAL	0	0	0	0	0	0	0
UFE/LOSSES	(0)	(0)	238	(23)	39	0	0
	27	28	29	30	31		
DAM NYCA	0	0	0	0	0		
DAM NON-NYCA	0	0	0	0	0		
DAM WHEELS	0	0	0	0	0		
DAM VIRTUAL	0	0	0	0	0		
BALANCING NYCA	231	234	240	199	(219)		
BALANCING NON-NYCA	0	0	0	0	0		
BALANCING WHEELS	0	0	0	0	0		
BALANCING VIRTUAL	0	0	0	0	0		
UFE/LOSSES	0	5	1	(199)	217		



SETTLEMENTS REPORT  
December 2021 Settlement Adjustment  
January 10, 2022

Initial – Market Residuals Delta Analysis

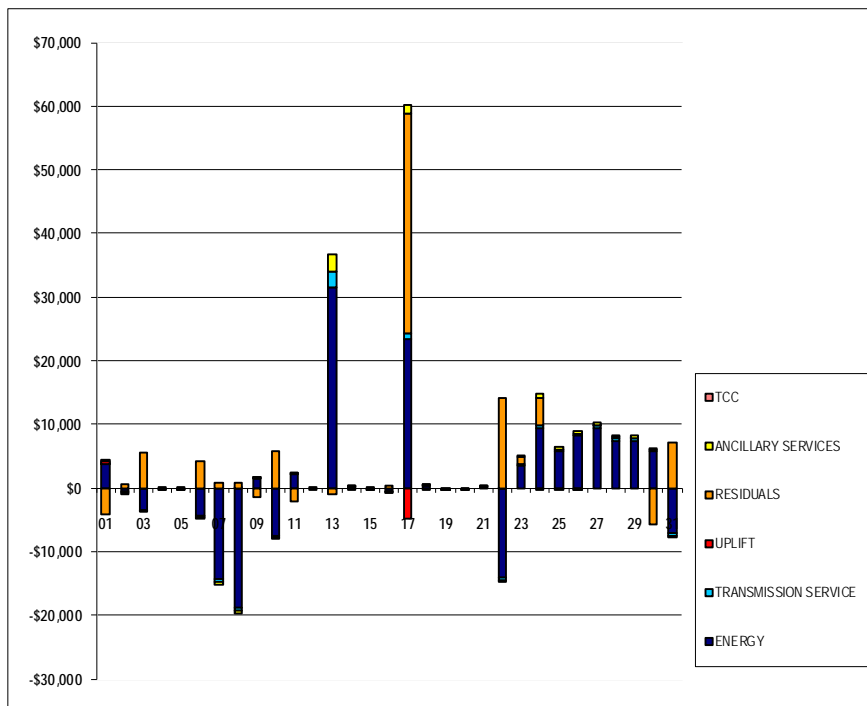
	MONDAY	TUESDAY	WEDNESDAY	THURSDAY	FRIDAY	SATURDAY	SUNDAY
			1	2	3	4	5
DAM ENERGY			\$0.01	\$0.00	\$0.00	\$0.00	\$0.00
DAM LOSSES			\$0.00	\$0.01	\$0.00	\$0.00	\$0.00
BALANCING ENERGY			(\$3,806.98)	\$614.79	\$3,882.40	(\$0.10)	\$36.09
BALANCING LOSSES			(\$211.19)	\$55.13	\$1,503.94	\$0.83	\$2.08
BALANCING CONGESTION			(\$94.37)	(\$41.10)	\$127.11	(\$0.40)	\$0.08
FINANCIAL IMPACT CHARGE			\$0.00	\$0.00	\$0.00	\$0.00	\$0.00
	6	7	8	9	10	11	12
DAM ENERGY	(\$0.01)	\$0.01	\$0.00	\$0.00	\$0.00	\$0.00	\$0.00
DAM LOSSES	\$0.01	\$0.01	\$0.01	(\$0.01)	\$0.00	\$0.01	\$0.00
BALANCING ENERGY	\$3,615.33	\$145.49	(\$362.51)	(\$1,299.58)	\$4,163.86	(\$1,867.88)	\$0.14
BALANCING LOSSES	\$380.19	\$683.18	\$784.14	(\$116.09)	\$627.98	(\$148.31)	(\$0.01)
BALANCING CONGESTION	\$143.33	\$12.63	\$404.42	\$12.77	\$962.25	(\$112.11)	(\$0.01)
FINANCIAL IMPACT CHARGE	\$0.00	\$0.00	\$0.00	\$0.00	\$0.00	\$0.00	\$0.00
	13	14	15	16	17	18	19
DAM ENERGY	(\$0.01)	\$0.01	\$0.00	\$0.00	(\$0.01)	(\$0.01)	\$0.00
DAM LOSSES	\$0.00	\$0.00	(\$0.01)	\$0.00	\$0.00	(\$0.01)	\$0.00
BALANCING ENERGY	(\$53.72)	(\$8.01)	\$0.22	\$289.49	\$32,756.00	(\$340.37)	\$0.08
BALANCING LOSSES	(\$931.42)	(\$0.75)	\$0.18	\$20.69	\$864.36	\$13.93	(\$0.01)
BALANCING CONGESTION	(\$75.50)	\$0.00	(\$0.04)	\$115.45	\$815.63	(\$2.67)	(\$0.28)
FINANCIAL IMPACT CHARGE	\$0.00	\$0.00	\$0.00	\$0.00	\$0.00	\$0.00	\$0.00
	20	21	22	23	24	25	26
DAM ENERGY	\$0.00	\$0.00	(\$0.01)	\$0.00	\$0.00	\$0.00	\$0.00
DAM LOSSES	\$0.00	\$0.00	\$0.00	\$0.00	\$0.01	\$0.00	\$0.00
BALANCING ENERGY	\$0.66	(\$0.10)	\$3,440.55	(\$756.59)	\$1,053.48	(\$4.11)	(\$6.14)
BALANCING LOSSES	\$0.03	\$0.23	\$425.99	\$877.77	\$538.78	(\$14.69)	(\$5.04)
BALANCING CONGESTION	(\$0.96)	\$0.70	\$10,284.22	\$1,157.24	\$2,763.52	(\$59.95)	(\$0.67)
FINANCIAL IMPACT CHARGE	\$0.00	\$0.00	(\$0.04)	\$0.00	\$0.00	\$0.00	\$0.00
	27	28	29	30	31		
DAM ENERGY	(\$0.01)	\$0.00	\$0.00	(\$0.01)	\$0.01		
DAM LOSSES	(\$0.01)	\$0.00	\$0.00	(\$0.01)	\$0.01		
BALANCING ENERGY	(\$4.94)	\$179.30	\$25.24	(\$5,740.79)	\$6,375.57		
BALANCING LOSSES	\$21.47	\$33.69	\$45.56	(\$37.71)	\$746.68		
BALANCING CONGESTION	(\$0.10)	(\$23.35)	(\$0.01)	(\$0.01)	\$120.03		
FINANCIAL IMPACT CHARGE	\$0.00	\$0.00	\$0.00	\$0.00	\$0.00		



SETTLEMENTS REPORT  
December 2021 Settlement Adjustment  
January 10, 2022

Initial – Market Costs Delta Analysis

	MONDAY	TUESDAY	WEDNESDAY	THURSDAY	FRIDAY	SATURDAY	SUNDAY
			1	2	3	4	5
ENERGY			\$3,717.86	(\$627.09)	(\$3,379.75)	(\$0.33)	(\$38.22)
TRANSMISSION SERVICE			\$105.97	(\$27.42)	(\$8.93)	(\$0.02)	(\$1.58)
UPLIFT			\$470.36	\$0.00	\$0.04	\$0.00	\$0.00
RESIDUALS			(\$4,112.53)	\$628.83	\$5,513.45	\$0.33	\$38.25
ANCILLARY SERVICES			\$0.42	(\$77.66)	(\$41.17)	(\$0.01)	(\$1.30)
TCC			\$0.00	\$0.00	\$0.00	\$0.00	\$0.00
	6	7	8	9	10	11	12
ENERGY	(\$4,386.27)	(\$14,401.62)	(\$18,775.03)	\$1,431.55	(\$7,476.01)	\$2,128.24	(\$0.10)
TRANSMISSION SERVICE	(\$177.84)	(\$426.47)	(\$477.87)	\$50.50	(\$283.80)	\$68.20	\$0.00
UPLIFT	(\$0.01)	\$0.00	\$0.02	\$9.87	\$0.01	\$0.01	\$0.00
RESIDUALS	\$4,138.85	\$841.32	\$826.06	(\$1,402.91)	\$5,754.09	(\$2,128.29)	\$0.12
ANCILLARY SERVICES	(\$148.88)	(\$439.38)	(\$493.96)	\$41.84	(\$254.10)	\$56.28	\$0.00
TCC	\$0.00	\$0.00	\$0.00	\$0.00	\$0.00	\$0.00	\$0.00
	13	14	15	16	17	18	19
ENERGY	\$31,406.03	\$32.31	(\$69.62)	(\$544.09)	\$23,359.97	\$329.06	(\$2.42)
TRANSMISSION SERVICE	\$2,633.24	\$1.58	(\$3.71)	(\$23.29)	\$1,039.19	\$7.75	(\$0.03)
UPLIFT	\$0.00	\$5.25	\$0.00	\$0.00	(\$4,910.46)	\$0.01	\$0.00
RESIDUALS	(\$1,060.65)	(\$8.75)	\$0.35	\$425.63	\$34,435.98	(\$329.13)	(\$0.21)
ANCILLARY SERVICES	\$2,713.09	\$1.72	(\$3.82)	(\$21.45)	\$1,341.69	\$6.41	(\$0.04)
TCC	\$0.00	\$0.00	\$0.00	\$0.00	\$0.00	\$0.00	\$0.00
	20	21	22	23	24	25	26
ENERGY	(\$0.64)	\$33.64	(\$14,168.98)	\$3,477.17	\$9,295.32	\$5,667.90	\$8,151.63
TRANSMISSION SERVICE	(\$0.06)	\$15.36	(\$368.56)	\$215.14	\$583.55	\$366.03	\$367.86
UPLIFT	\$0.00	\$0.00	\$0.02	\$0.00	(\$0.01)	\$0.01	(\$0.01)
RESIDUALS	(\$0.27)	\$0.83	\$14,150.71	\$1,278.42	\$4,355.79	(\$78.75)	(\$11.85)
ANCILLARY SERVICES	(\$0.05)	\$15.84	(\$304.08)	\$214.23	\$613.57	\$377.15	\$379.04
TCC	\$0.00	\$0.00	\$0.00	\$0.00	\$0.00	\$0.00	\$0.00
	27	28	29	30	31		
ENERGY	\$9,478.60	\$7,404.84	\$7,441.10	\$5,778.45	(\$7,114.75)		
TRANSMISSION SERVICE	\$357.68	\$362.10	\$371.29	\$308.45	(\$338.80)		
UPLIFT	\$0.00	\$0.00	\$0.00	\$0.00	\$0.00		
RESIDUALS	\$16.41	\$189.64	\$70.79	(\$5,778.53)	\$7,242.30		
ANCILLARY SERVICES	\$368.55	\$374.80	\$382.83	\$254.44	(\$321.85)		
TCC	\$0.00	\$0.00	\$0.00	\$0.00	\$0.00		



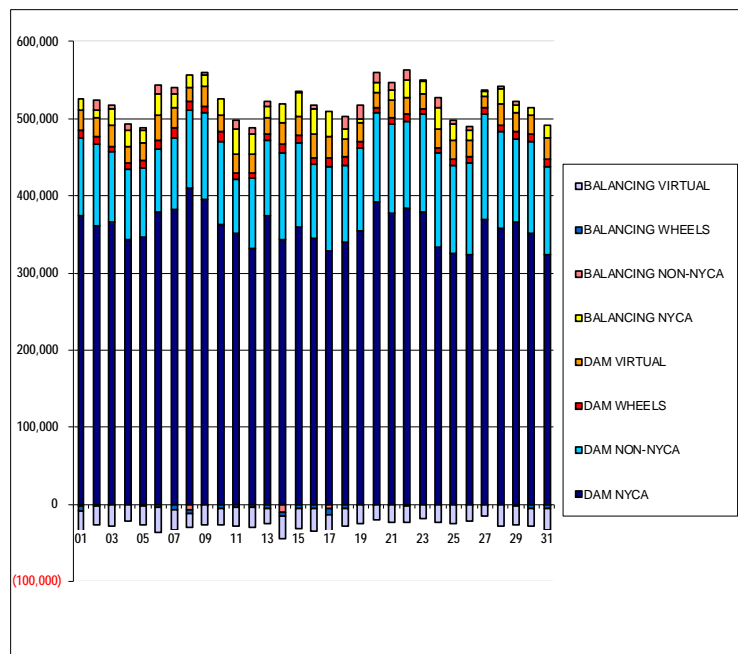
# SETTLEMENTS REPORT

## December 2021 Settlement Adjustment

### January 10, 2022

## Weekly Settlement – Market Supply Analysis

	MONDAY	TUESDAY	WEDNESDAY	THURSDAY	FRIDAY	SATURDAY	SUNDAY
			1	2	3	4	5
DAM NYCA			374,188	360,787	366,748	343,384	346,400
DAM NON-NYCA			101,172	106,018	90,426	91,496	89,327
DAM WHEELS			10,207	9,635	7,248	8,158	9,922
DAM VIRTUAL			25,336	24,189	27,080	21,529	23,761
BALANCING NYCA			15,361	9,887	20,748	20,977	15,213
BALANCING NON-NYCA			(2,687)	13,628	5,846	7,283	3,921
BALANCING WHEELS			(6,907)	(2,435)	(984)	(958)	(2,722)
BALANCING VIRTUAL			(25,336)	(24,189)	(27,080)	(21,529)	(23,761)
	6	7	8	9	10	11	12
DAM NYCA	378,797	382,859	410,049	395,357	362,804	351,123	332,283
DAM NON-NYCA	81,968	92,414	100,710	111,860	107,729	70,887	90,127
DAM WHEELS	11,216	12,337	11,145	8,233	13,137	8,283	7,500
DAM VIRTUAL	33,347	27,134	18,327	26,368	20,667	24,382	24,682
BALANCING NYCA	26,490	17,685	16,444	15,483	20,793	32,000	25,257
BALANCING NON-NYCA	11,612	8,553	(7,459)	1,992	(137)	11,146	8,411
BALANCING WHEELS	(4,016)	(6,541)	(3,945)	(1,033)	(6,094)	(4,419)	(4,752)
BALANCING VIRTUAL	(33,347)	(27,134)	(18,327)	(26,368)	(20,667)	(24,382)	(24,682)
	13	14	15	16	17	18	19
DAM NYCA	374,359	343,392	359,279	344,097	328,197	340,276	355,226
DAM NON-NYCA	97,548	112,950	109,492	97,092	109,973	99,785	106,918
DAM WHEELS	7,885	10,160	9,093	8,754	10,321	11,317	7,387
DAM VIRTUAL	21,033	28,367	25,740	29,628	28,772	22,998	24,492
BALANCING NYCA	14,651	25,017	29,702	33,476	31,472	11,921	5,850
BALANCING NON-NYCA	6,345	(10,459)	235	5,257	(6,331)	17,311	17,102
BALANCING WHEELS	(4,837)	(5,550)	(5,595)	(4,918)	(7,024)	(5,310)	(187)
BALANCING VIRTUAL	(21,033)	(28,367)	(25,740)	(29,628)	(28,772)	(22,998)	(24,492)
	20	21	22	23	24	25	26
DAM NYCA	391,580	377,342	384,668	379,570	334,234	326,022	323,019
DAM NON-NYCA	115,805	116,080	111,735	126,133	120,809	113,715	119,847
DAM WHEELS	7,677	7,727	10,103	7,695	7,293	7,550	8,303
DAM VIRTUAL	19,575	23,367	20,467	18,272	23,765	24,506	20,950
BALANCING NYCA	12,545	12,592	23,000	16,339	28,912	21,768	13,488
BALANCING NON-NYCA	12,723	9,179	12,981	754	12,347	5,147	5,030
BALANCING WHEELS	(477)	(527)	(2,903)	(495)	(93)	(350)	(1,103)
BALANCING VIRTUAL	(19,575)	(23,367)	(20,467)	(18,272)	(23,765)	(24,506)	(20,950)
	27	28	29	30	31		
DAM NYCA	368,889	357,542	366,807	351,144	323,574		
DAM NON-NYCA	136,976	126,316	107,302	119,997	114,917		
DAM WHEELS	8,620	8,189	9,328	8,902	9,041		
DAM VIRTUAL	14,723	27,208	24,324	23,994	28,317		
BALANCING NYCA	6,760	18,864	9,802	11,035	15,974		
BALANCING NON-NYCA	404	4,351	4,504	(802)	(333)		
BALANCING WHEELS	(1,420)	(1,142)	(2,409)	(4,255)	(4,817)		
BALANCING VIRTUAL	(14,723)	(27,208)	(24,324)	(23,994)	(28,317)		



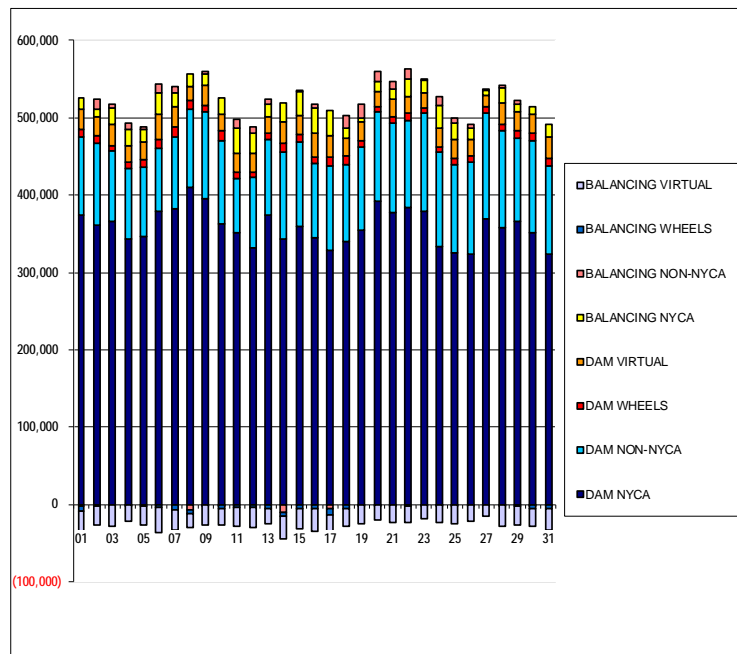
# SETTLEMENTS REPORT

## December 2021 Settlement Adjustment

### January 10, 2022

## Initial Settlement Adjustment – Market Supply Analysis

	MONDAY	TUESDAY	WEDNESDAY	THURSDAY	FRIDAY	SATURDAY	SUNDAY
			1	2	3	4	5
DAM NYCA			374,188	360,787	366,748	343,384	346,400
DAM NON-NYCA			101,172	106,018	90,426	91,496	89,327
DAM WHEELS			10,207	9,635	7,248	8,158	9,922
DAM VIRTUAL			25,336	24,189	27,080	21,529	23,761
BALANCING NYCA			15,361	9,887	20,833	20,977	15,213
BALANCING NON-NYCA			(2,700)	13,628	5,846	7,283	3,921
BALANCING WHEELS			(6,907)	(2,435)	(984)	(958)	(2,722)
BALANCING VIRTUAL			(25,336)	(24,189)	(27,080)	(21,529)	(23,761)
	6	7	8	9	10	11	12
DAM NYCA	378,797	382,859	410,049	395,357	362,804	351,123	332,283
DAM NON-NYCA	81,968	92,414	100,710	111,860	107,729	70,887	90,127
DAM WHEELS	11,216	12,337	11,145	8,233	13,137	8,283	7,500
DAM VIRTUAL	33,347	27,134	18,327	26,368	20,667	24,382	24,682
BALANCING NYCA	26,483	17,410	16,131	15,483	20,730	32,000	25,257
BALANCING NON-NYCA	11,612	8,553	(7,459)	1,992	(137)	11,146	8,411
BALANCING WHEELS	(4,016)	(6,541)	(3,945)	(1,033)	(6,094)	(4,419)	(4,752)
BALANCING VIRTUAL	(33,347)	(27,134)	(18,327)	(26,368)	(20,667)	(24,382)	(24,682)
	13	14	15	16	17	18	19
DAM NYCA	374,359	343,392	359,279	344,097	328,197	340,276	355,226
DAM NON-NYCA	97,548	112,950	109,492	97,092	109,973	99,785	106,918
DAM WHEELS	7,885	10,160	9,093	8,754	10,321	11,317	7,387
DAM VIRTUAL	21,033	28,367	25,740	29,628	28,772	22,998	24,492
BALANCING NYCA	16,350	25,017	29,699	33,469	32,615	11,921	5,850
BALANCING NON-NYCA	6,345	(10,459)	235	5,257	(5,953)	17,311	17,102
BALANCING WHEELS	(4,837)	(5,550)	(5,595)	(4,918)	(7,024)	(5,310)	(187)
BALANCING VIRTUAL	(21,033)	(28,367)	(25,740)	(29,628)	(28,772)	(22,998)	(24,492)
	20	21	22	23	24	25	26
DAM NYCA	391,580	377,342	384,668	379,570	334,234	326,022	323,019
DAM NON-NYCA	115,805	116,080	111,735	126,133	120,809	113,715	119,847
DAM WHEELS	7,677	7,727	10,103	7,695	7,293	7,550	8,303
DAM VIRTUAL	19,575	23,367	20,467	18,272	23,765	24,506	20,950
BALANCING NYCA	12,545	12,602	23,000	16,455	29,327	22,004	13,726
BALANCING NON-NYCA	12,723	9,179	12,981	754	12,347	5,147	5,030
BALANCING WHEELS	(477)	(527)	(2,903)	(495)	(93)	(350)	(1,103)
BALANCING VIRTUAL	(19,575)	(23,367)	(20,467)	(18,272)	(23,765)	(24,506)	(20,950)
	27	28	29	30	31		
DAM NYCA	368,889	357,542	366,807	351,144	323,574		
DAM NON-NYCA	136,976	126,316	107,302	119,997	114,917		
DAM WHEELS	8,620	8,189	9,328	8,902	9,041		
DAM VIRTUAL	14,723	27,208	24,324	23,994	28,317		
BALANCING NYCA	6,991	19,103	10,043	11,035	15,972		
BALANCING NON-NYCA	404	4,351	4,504	(802)	(333)		
BALANCING WHEELS	(1,420)	(1,142)	(2,409)	(4,255)	(4,817)		
BALANCING VIRTUAL	(14,723)	(27,208)	(24,324)	(23,994)	(28,317)		



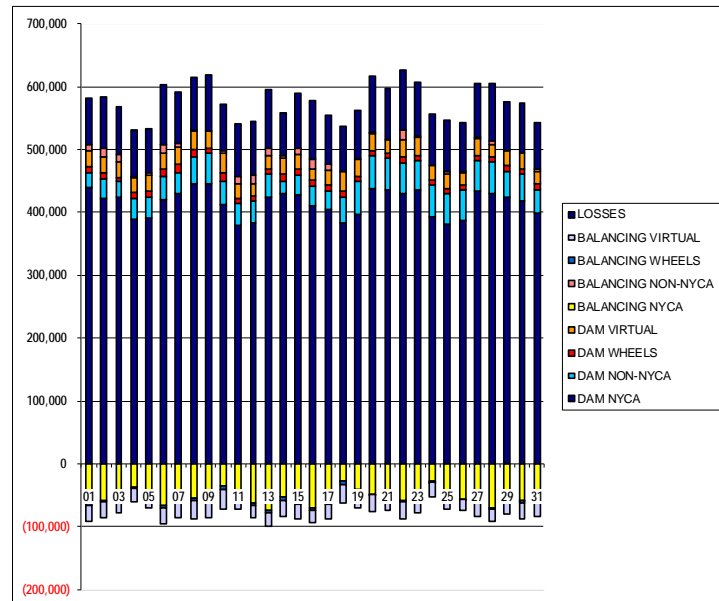
# SETTLEMENTS REPORT

## December 2021 Settlement Adjustment

### January 10, 2022

## Weekly Settlement – Market Withdrawals Analysis

	MONDAY	TUESDAY	WEDNESDAY	THURSDAY	FRIDAY	SATURDAY	SUNDAY
			1	2	3	4	5
DAM NYCA			438,861	422,820	424,491	389,608	390,483
DAM NON-NYCA			24,181	30,355	24,213	33,380	33,036
DAM WHEELS			10,207	9,635	7,248	8,158	9,922
DAM VIRTUAL			25,326	26,216	25,314	23,133	25,480
BALANCING NYCA			(58,290)	(57,811)	(51,940)	(37,057)	(42,610)
BALANCING NON-NYCA			9,247	11,951	10,605	3,050	3,180
BALANCING WHEELS			(6,907)	(2,435)	(984)	(958)	(2,722)
BALANCING VIRTUAL			(25,326)	(26,216)	(25,314)	(23,133)	(25,480)
UFE/LOSSES			74,035	83,005	76,399	74,160	70,773
	6	7	8	9	10	11	12
DAM NYCA	419,527	430,576	446,393	446,400	412,950	379,488	383,857
DAM NON-NYCA	37,378	32,923	42,707	47,912	36,191	34,745	34,985
DAM WHEELS	11,216	12,337	11,145	8,233	13,137	8,283	7,500
DAM VIRTUAL	25,994	28,160	29,412	27,345	31,496	22,303	18,720
BALANCING NYCA	(66,215)	(50,000)	(53,538)	(55,225)	(35,238)	(45,346)	(61,587)
BALANCING NON-NYCA	13,487	4,905	1,198	(2,425)	3,543	12,650	14,227
BALANCING WHEELS	(4,016)	(6,541)	(3,945)	(1,033)	(6,094)	(4,419)	(4,752)
BALANCING VIRTUAL	(25,994)	(28,160)	(29,412)	(27,345)	(31,496)	(22,303)	(18,720)
UFE/LOSSES	94,689	83,107	82,985	88,030	73,743	83,618	84,597
	13	14	15	16	17	18	19
DAM NYCA	424,834	429,451	427,607	411,042	403,749	382,956	397,663
DAM NON-NYCA	36,007	20,805	32,406	30,764	30,331	40,414	51,881
DAM WHEELS	7,885	10,160	9,093	8,754	10,321	11,317	7,387
DAM VIRTUAL	21,471	25,541	23,880	18,805	23,099	30,099	26,987
BALANCING NYCA	(73,234)	(52,141)	(58,186)	(69,895)	(57,707)	(26,784)	(41,509)
BALANCING NON-NYCA	11,595	3,915	8,959	15,830	9,173	(378)	(1,893)
BALANCING WHEELS	(4,837)	(5,550)	(5,595)	(4,918)	(7,024)	(5,310)	(187)
BALANCING VIRTUAL	(21,471)	(25,541)	(23,880)	(18,805)	(23,099)	(30,099)	(26,987)
UFE/LOSSES	93,703	68,869	87,922	92,182	77,764	73,085	78,953
	20	21	22	23	24	25	26
DAM NYCA	438,144	434,857	429,507	436,477	392,031	382,147	387,565
DAM NON-NYCA	51,907	50,957	49,486	46,003	51,259	48,742	48,637
DAM WHEELS	7,677	7,727	10,103	7,695	7,293	7,550	8,303
DAM VIRTUAL	26,594	21,041	26,572	29,923	24,569	23,016	17,537
BALANCING NYCA	(48,997)	(49,258)	(58,205)	(47,315)	(27,801)	(19,107)	(55,995)
BALANCING NON-NYCA	2,146	(3,838)	15,808	1,727	(412)	4,061	3,053
BALANCING WHEELS	(477)	(527)	(2,903)	(495)	(93)	(350)	(1,103)
BALANCING VIRTUAL	(26,594)	(21,041)	(26,572)	(29,923)	(24,569)	(23,016)	(17,537)
UFE/LOSSES	89,454	82,475	95,788	85,905	81,225	80,809	78,124
	27	28	29	30	31		
DAM NYCA	434,122	429,211	424,387	417,367	397,896		
DAM NON-NYCA	47,796	51,768	40,665	42,907	38,157		
DAM WHEELS	8,620	8,189	9,328	8,902	9,041		
DAM VIRTUAL	25,995	18,498	22,816	24,692	20,589		
BALANCING NYCA	(56,669)	(70,855)	(54,126)	(57,971)	(58,279)		
BALANCING NON-NYCA	2,583	5,490	(576)	(651)	3,075		
BALANCING WHEELS	(1,420)	(1,142)	(2,409)	(4,255)	(4,817)		
BALANCING VIRTUAL	(25,995)	(18,498)	(22,816)	(24,692)	(20,589)		
UFE/LOSSES	85,197	91,460	78,064	79,721	73,284		



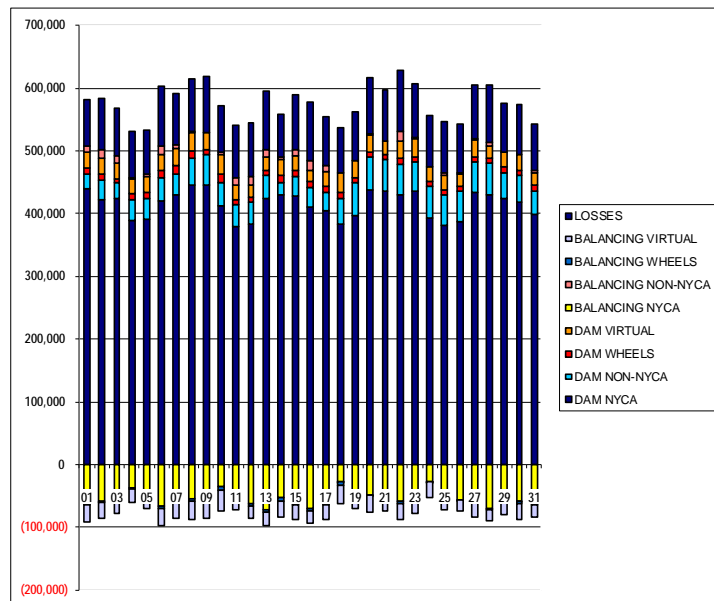
# SETTLEMENTS REPORT

## December 2021 Settlement Adjustment

### January 10, 2022

## Initial Settlement Adjustment – Market Withdrawals Analysis

	MONDAY	TUESDAY	WEDNESDAY	THURSDAY	FRIDAY	SATURDAY	SUNDAY
			1	2	3	4	5
DAM NYCA			438,861	422,820	424,491	389,608	390,483
DAM NON-NYCA			24,181	30,355	24,213	33,380	33,036
DAM WHEELS			10,207	9,635	7,248	8,158	9,922
DAM VIRTUAL			25,326	26,216	25,314	23,133	25,480
BALANCING NYCA			(58,222)	(57,828)	(51,946)	(37,057)	(42,611)
BALANCING NON-NYCA			9,247	11,951	10,605	3,050	3,180
BALANCING WHEELS			(6,907)	(2,435)	(984)	(958)	(2,722)
BALANCING VIRTUAL			(25,326)	(26,216)	(25,314)	(23,133)	(25,480)
UFE/LOSSES			73,955	83,022	76,490	74,160	70,774
	6	7	8	9	10	11	12
DAM NYCA	419,527	430,576	446,393	446,400	412,950	379,488	383,857
DAM NON-NYCA	37,378	32,923	42,707	47,912	36,191	34,745	34,985
DAM WHEELS	11,216	12,337	11,145	8,233	13,137	8,283	7,500
DAM VIRTUAL	25,994	28,160	29,412	27,345	31,496	22,303	18,720
BALANCING NYCA	(66,330)	(50,275)	(53,846)	(55,193)	(35,421)	(45,302)	(61,587)
BALANCING NON-NYCA	13,487	4,905	1,198	(2,425)	3,543	12,650	14,227
BALANCING WHEELS	(4,016)	(6,541)	(3,945)	(1,033)	(6,094)	(4,419)	(4,752)
BALANCING VIRTUAL	(25,994)	(28,160)	(29,412)	(27,345)	(31,496)	(22,303)	(18,720)
UFE/LOSSES	94,797	83,107	82,980	87,998	73,863	83,574	84,597
	13	14	15	16	17	18	19
DAM NYCA	424,834	429,451	427,607	411,042	403,749	382,956	397,663
DAM NON-NYCA	36,007	20,805	32,406	30,764	30,331	40,414	51,881
DAM WHEELS	7,885	10,160	9,093	8,754	10,321	11,317	7,387
DAM VIRTUAL	21,471	25,541	23,880	18,805	23,099	30,099	26,987
BALANCING NYCA	(71,535)	(52,140)	(58,188)	(69,910)	(57,037)	(26,779)	(41,509)
BALANCING NON-NYCA	11,595	3,915	8,959	15,830	9,173	(378)	(1,893)
BALANCING WHEELS	(4,837)	(5,550)	(5,595)	(4,918)	(7,024)	(5,310)	(187)
BALANCING VIRTUAL	(21,471)	(25,541)	(23,880)	(18,805)	(23,099)	(30,099)	(26,987)
UFE/LOSSES	93,703	68,869	87,922	92,190	78,616	73,080	78,953
	20	21	22	23	24	25	26
DAM NYCA	438,144	434,857	429,507	436,477	392,031	382,147	387,565
DAM NON-NYCA	51,907	50,957	49,486	46,003	51,259	48,742	48,637
DAM WHEELS	7,617	7,727	10,103	7,695	7,293	7,550	8,303
DAM VIRTUAL	26,594	21,041	26,572	29,923	24,569	23,016	17,537
BALANCING NYCA	(48,997)	(49,248)	(58,443)	(47,176)	(27,425)	(48,871)	(55,758)
BALANCING NON-NYCA	2,146	(3,838)	15,808	1,727	(412)	4,061	3,053
BALANCING WHEELS	(477)	(527)	(2,903)	(495)	(93)	(350)	(1,103)
BALANCING VIRTUAL	(26,594)	(21,041)	(26,572)	(29,923)	(24,569)	(23,016)	(17,537)
UFE/LOSSES	89,454	82,475	96,025	85,882	81,263	80,809	78,124
	27	28	29	30	31		
DAM NYCA	434,122	429,211	424,387	417,367	397,896		
DAM NON-NYCA	47,796	51,768	40,665	42,907	38,157		
DAM WHEELS	8,620	8,189	9,328	8,902	9,041		
DAM VIRTUAL	25,995	18,498	22,816	24,692	20,589		
BALANCING NYCA	(56,438)	(70,621)	(53,886)	(57,772)	(58,498)		
BALANCING NON-NYCA	2,583	5,490	(576)	(651)	3,075		
BALANCING WHEELS	(1,420)	(1,142)	(2,409)	(4,255)	(4,817)		
BALANCING VIRTUAL	(25,995)	(18,498)	(22,816)	(24,692)	(20,589)		
UFE/LOSSES	85,197	91,465	78,065	79,522	73,501		

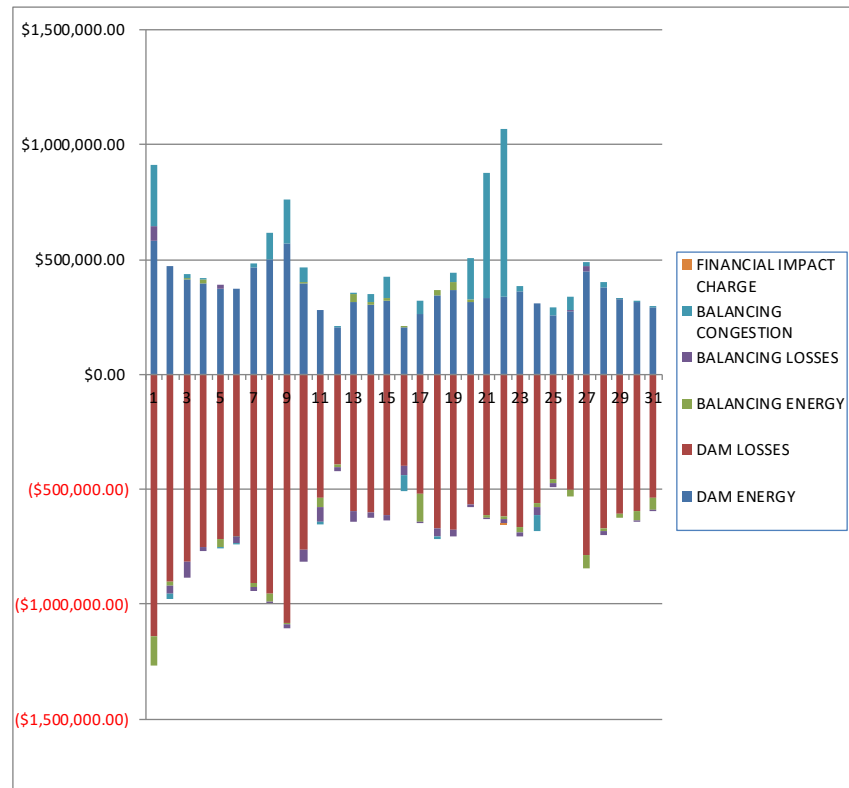




SETTLEMENTS REPORT  
December 2021 Settlement Adjustment  
January 10, 2022

Weekly Settlement – Market Residuals Analysis

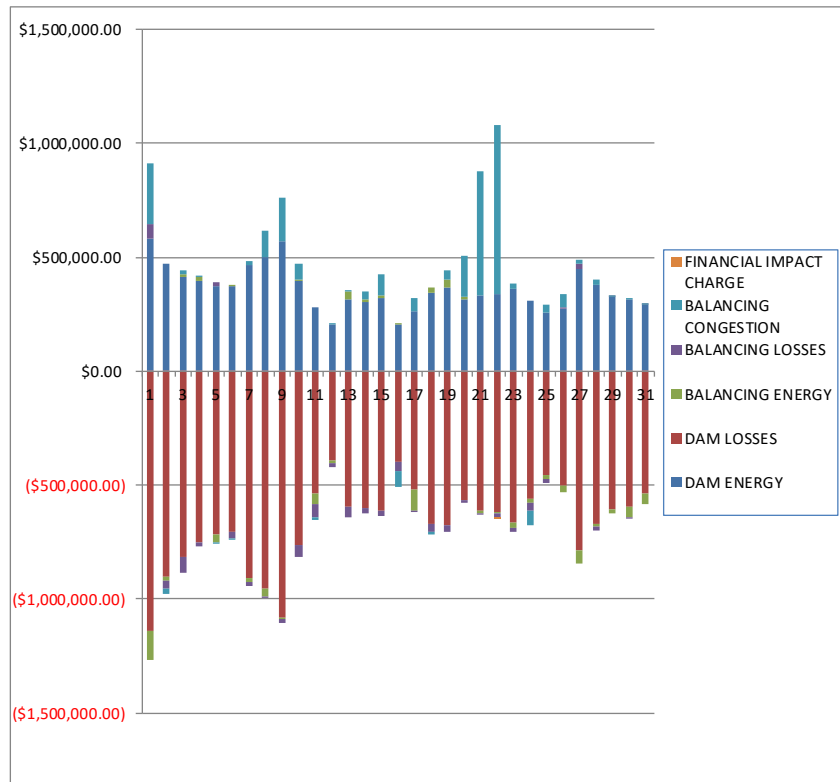
	MONDAY	TUESDAY	WEDNESDAY	THURSDAY	FRIDAY	SATURDAY	SUNDAY
			1	2	3	4	5
DAM ENERGY			\$579,000.40	\$468,905.09	\$416,626.22	\$395,517.51	\$373,463.25
DAM LOSSES			(\$1,137,277.21)	(\$902,628.83)	(\$812,479.85)	(\$748,137.81)	(\$716,916.56)
BALANCING ENERGY			(\$126,565.79)	(\$19,171.74)	\$5,571.15	\$15,465.78	(\$31,915.73)
BALANCING LOSSES			\$66,591.67	(\$33,823.00)	(\$71,834.58)	(\$21,721.06)	\$16,745.80
BALANCING CONGESTION			\$264,115.58	(\$23,094.03)	\$16,410.10	\$8,119.86	(\$10,467.60)
FINANCIAL IMPACT CHARGE			\$0.00	\$0.00	\$0.00	\$0.00	\$0.00
	6	7	8	9	10	11	12
DAM ENERGY	\$374,896.53	\$466,198.12	\$500,842.56	\$572,929.85	\$398,610.66	\$280,668.31	\$202,703.17
DAM LOSSES	(\$703,358.35)	(\$909,026.98)	(\$955,561.34)	(\$1,080,146.40)	(\$764,186.29)	(\$535,322.93)	(\$389,881.93)
BALANCING ENERGY	(\$938.57)	(\$14,593.34)	(\$31,339.85)	(\$8,387.85)	\$1,482.71	(\$43,551.91)	(\$11,402.63)
BALANCING LOSSES	(\$30,306.45)	(\$20,817.10)	(\$2,893.80)	(\$15,990.84)	(\$51,950.57)	(\$60,482.04)	(\$16,725.57)
BALANCING CONGESTION	(\$6,292.63)	\$19,563.58	\$114,290.56	\$191,273.76	\$67,127.92	(\$13,077.49)	\$5,973.94
FINANCIAL IMPACT CHARGE	\$0.00	\$0.00	\$0.00	\$0.00	\$0.00	\$0.00	\$0.00
	13	14	15	16	17	18	19
DAM ENERGY	\$313,231.40	\$304,951.18	\$322,502.95	\$207,985.00	\$264,158.99	\$341,774.27	\$367,566.69
DAM LOSSES	(\$591,881.22)	(\$601,612.94)	(\$610,931.56)	(\$396,606.97)	(\$520,415.03)	(\$672,650.27)	(\$676,967.00)
BALANCING ENERGY	\$35,132.18	\$9,946.23	\$9,467.51	\$2,005.95	(\$121,602.58)	\$23,974.82	\$32,289.65
BALANCING LOSSES	(\$50,591.60)	(\$21,199.12)	(\$23,889.95)	(\$42,038.39)	(\$7,524.97)	(\$29,492.55)	(\$30,424.69)
BALANCING CONGESTION	\$991.10	\$37,993.29	\$91,219.24	(\$67,126.48)	\$56,721.60	(\$15,248.03)	\$44,642.69
FINANCIAL IMPACT CHARGE	\$0.00	\$0.00	\$0.00	\$0.00	\$0.00	\$0.00	\$0.00
	20	21	22	23	24	25	26
DAM ENERGY	\$313,116.54	\$334,186.93	\$340,921.62	\$364,152.54	\$309,011.85	\$255,632.76	\$274,114.82
DAM LOSSES	(\$563,830.95)	(\$614,017.03)	(\$620,061.54)	(\$661,169.04)	(\$557,436.43)	(\$452,795.24)	(\$503,224.50)
BALANCING ENERGY	\$12,325.50	(\$7,777.52)	(\$9,373.14)	(\$27,570.23)	(\$20,544.27)	(\$20,356.39)	(\$29,139.55)
BALANCING LOSSES	(\$13,110.54)	(\$9,676.38)	(\$16,310.75)	(\$17,075.54)	(\$36,483.33)	(\$17,456.10)	\$6,056.62
BALANCING CONGESTION	\$182,240.94	\$544,398.23	\$727,827.92	\$19,212.90	(\$67,491.89)	\$35,641.81	\$58,223.54
FINANCIAL IMPACT CHARGE	\$0.00	\$0.00	(\$2,777.72)	\$0.00	\$0.00	\$0.00	\$0.00
	27	28	29	30	31		
DAM ENERGY	\$446,021.02	\$377,317.32	\$324,208.80	\$316,016.28	\$290,836.28		
DAM LOSSES	(\$786,094.94)	(\$669,054.31)	(\$603,516.36)	(\$593,507.96)	(\$536,128.93)		
BALANCING ENERGY	(\$59,328.38)	(\$14,419.93)	(\$22,599.62)	(\$41,747.24)	(\$52,195.85)		
BALANCING LOSSES	\$24,620.00	(\$13,050.94)	\$1,601.19	(\$2,042.41)	(\$237.68)		
BALANCING CONGESTION	\$18,564.73	\$24,243.77	\$4,065.99	\$2,091.66	\$1,154.97		
FINANCIAL IMPACT CHARGE	\$0.00	\$0.00	\$0.00	\$0.00	\$0.00		



SETTLEMENTS REPORT  
December 2021 Settlement Adjustment  
January 10, 2022

Initial Settlement Adjustment – Market Residuals Analysis

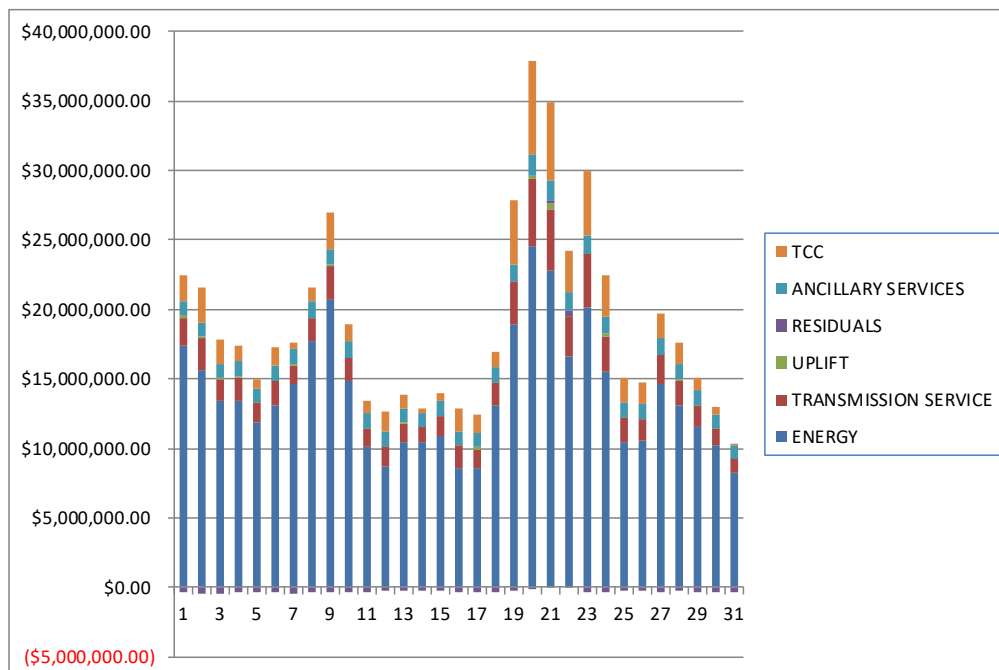
	MONDAY	TUESDAY	WEDNESDAY	THURSDAY	FRIDAY	SATURDAY	SUNDAY
			1	2	3	4	5
DAM ENERGY			\$579,000.41	\$468,905.09	\$416,626.22	\$395,517.51	\$373,463.25
DAM LOSSES			(\$1,137,277.21)	(\$902,628.82)	(\$812,479.85)	(\$748,137.81)	(\$716,916.56)
BALANCING ENERGY			(\$130,372.77)	(\$18,556.95)	\$9,453.55	\$15,465.68	(\$31,879.64)
BALANCING LOSSES			\$66,380.48	(\$33,767.87)	(\$70,330.64)	(\$21,720.23)	\$16,747.88
BALANCING CONGESTION			\$264,021.21	(\$23,135.13)	\$16,537.21	\$8,119.46	(\$10,467.52)
FINANCIAL IMPACT CHARGE			\$0.00	\$0.00	\$0.00	\$0.00	\$0.00
	6	7	8	9	10	11	12
DAM ENERGY	\$374,896.52	\$466,198.13	\$500,842.56	\$572,929.85	\$398,610.66	\$280,668.31	\$202,703.17
DAM LOSSES	(\$703,358.34)	(\$909,026.97)	(\$955,561.33)	(\$1,080,146.41)	(\$764,186.29)	(\$535,322.92)	(\$389,881.93)
BALANCING ENERGY	\$2,676.76	(\$14,447.85)	(\$31,702.36)	(\$9,687.43)	\$5,646.57	(\$45,419.79)	(\$11,402.49)
BALANCING LOSSES	(\$29,926.26)	(\$20,133.92)	(\$2,109.66)	(\$16,106.93)	(\$51,322.59)	(\$60,630.35)	(\$16,725.58)
BALANCING CONGESTION	(\$6,149.30)	\$19,576.21	\$114,694.98	\$191,286.53	\$68,090.17	(\$13,189.60)	\$5,973.93
FINANCIAL IMPACT CHARGE	\$0.00	\$0.00	\$0.00	\$0.00	\$0.00	\$0.00	\$0.00
	13	14	15	16	17	18	19
DAM ENERGY	\$313,231.39	\$304,951.19	\$322,502.95	\$207,985.00	\$264,158.98	\$341,774.26	\$367,566.69
DAM LOSSES	(\$591,881.22)	(\$601,612.94)	(\$610,931.57)	(\$396,606.97)	(\$520,415.03)	(\$672,650.28)	(\$676,967.00)
BALANCING ENERGY	\$35,078.46	\$9,938.22	\$9,467.73	\$2,295.44	(\$88,846.58)	\$23,634.45	\$32,289.73
BALANCING LOSSES	(\$51,523.02)	(\$21,199.87)	(\$23,889.77)	(\$42,017.70)	(\$6,660.61)	(\$29,478.62)	(\$30,424.70)
BALANCING CONGESTION	\$915.60	\$37,993.29	\$91,219.20	(\$67,011.03)	\$57,537.23	(\$15,250.70)	\$44,642.41
FINANCIAL IMPACT CHARGE	\$0.00	\$0.00	\$0.00	\$0.00	\$0.00	\$0.00	\$0.00
	20	21	22	23	24	25	26
DAM ENERGY	\$313,116.54	\$334,186.93	\$340,921.61	\$364,152.54	\$309,011.85	\$255,632.76	\$274,114.82
DAM LOSSES	(\$563,830.95)	(\$614,017.03)	(\$620,061.54)	(\$661,169.04)	(\$557,436.42)	(\$452,795.24)	(\$503,224.50)
BALANCING ENERGY	\$12,326.16	(\$7,777.62)	(\$5,932.59)	(\$28,326.82)	(\$19,490.79)	(\$20,360.50)	(\$29,145.69)
BALANCING LOSSES	(\$13,110.51)	(\$9,676.15)	(\$15,884.76)	(\$16,197.77)	(\$35,944.55)	(\$17,470.79)	\$6,051.58
BALANCING CONGESTION	\$182,239.98	\$544,398.93	\$738,112.14	\$20,370.14	(\$64,728.37)	\$35,581.86	\$58,222.87
FINANCIAL IMPACT CHARGE	\$0.00	\$0.00	(\$2,777.76)	\$0.00	\$0.00	\$0.00	\$0.00
	27	28	29	30	31		
DAM ENERGY	\$446,021.01	\$377,317.32	\$324,208.80	\$316,016.27	\$290,836.29		
DAM LOSSES	(\$786,094.95)	(\$669,054.31)	(\$603,516.36)	(\$593,507.97)	(\$536,128.92)		
BALANCING ENERGY	(\$59,333.32)	(\$14,240.63)	(\$22,574.38)	(\$47,488.03)	(\$45,820.28)		
BALANCING LOSSES	\$24,641.47	(\$13,017.25)	\$1,646.75	(\$2,080.12)	\$509.00		
BALANCING CONGESTION	\$18,564.63	\$24,220.42	\$4,065.98	\$2,091.65	\$1,275.00		
FINANCIAL IMPACT CHARGE	\$0.00	\$0.00	\$0.00	\$0.00	\$0.00		



SETTLEMENTS REPORT  
December 2021 Settlement Adjustment  
January 10, 2022

Weekly Settlement – Market Costs Analysis

	MONDAY	TUESDAY	WEDNESDAY	THURSDAY	FRIDAY	SATURDAY	SUNDAY
			1	2	3	4	5
ENERGY			\$17,422,119.18	\$15,637,163.66	\$13,406,247.03	\$13,463,585.23	\$11,919,348.71
TRANSMISSION SERVICE			\$1,976,170.46	\$2,346,953.30	\$1,611,556.76	\$1,627,642.97	\$1,366,132.85
UPLIFT			\$190,518.62	\$45,679.49	\$19,080.10	\$122,354.41	\$8,466.88
RESIDUALS			(\$354,135.35)	(\$509,812.51)	(\$445,706.96)	(\$350,755.72)	(\$369,090.84)
ANCILLARY SERVICES			\$1,032,308.96	\$1,042,110.70	\$1,063,420.44	\$1,040,025.92	\$1,025,437.17
TCC			\$1,831,506.45	\$2,490,662.36	\$1,702,262.25	\$1,110,221.77	\$647,498.74
	6	7	8	9	10	11	12
ENERGY	\$13,063,641.30	\$14,617,530.62	\$17,722,497.02	\$20,707,365.16	\$14,811,459.52	\$10,168,406.69	\$8,636,308.59
TRANSMISSION SERVICE	\$1,821,013.00	\$1,378,477.88	\$1,619,143.01	\$2,463,003.07	\$1,688,840.97	\$1,322,037.56	\$1,498,066.73
UPLIFT	\$6,633.90	\$125,328.19	\$80,813.12	\$13,394.69	\$51,249.26	\$3,159.25	\$17,759.04
RESIDUALS	(\$365,999.47)	(\$458,675.72)	(\$374,661.87)	(\$340,321.48)	(\$348,915.57)	(\$371,766.06)	(\$209,333.02)
ANCILLARY SERVICES	\$1,058,298.74	\$1,012,176.38	\$1,121,828.95	\$1,148,980.32	\$1,118,898.04	\$1,023,209.81	\$1,016,042.54
TCC	\$1,343,722.59	\$492,984.55	\$1,031,323.11	\$2,636,116.57	\$1,247,123.78	\$869,727.65	\$1,437,243.90
	13	14	15	16	17	18	19
ENERGY	\$10,430,804.45	\$10,416,677.70	\$10,937,418.92	\$8,551,678.50	\$8,550,990.51	\$13,132,829.35	\$18,986,714.61
TRANSMISSION SERVICE	\$1,389,060.22	\$1,099,518.27	\$1,376,494.30	\$1,668,648.59	\$1,343,854.25	\$1,608,403.56	\$3,007,720.59
UPLIFT	\$41,617.18	\$32,635.36	\$34,088.59	\$6,208.13	\$238,648.46	\$15,654.30	\$24,872.45
RESIDUALS	(\$293,118.14)	(\$269,921.36)	(\$211,631.81)	(\$295,780.89)	(\$328,661.99)	(\$351,641.76)	(\$262,892.66)
ANCILLARY SERVICES	\$1,057,110.61	\$1,029,514.47	\$1,045,766.89	\$1,028,240.97	\$993,104.59	\$1,116,943.62	\$1,178,018.60
TCC	\$972,750.32	\$333,766.73	\$628,558.66	\$1,564,504.26	\$1,297,701.93	\$1,120,127.15	\$4,711,297.95
	20	21	22	23	24	25	26
ENERGY	\$24,529,481.48	\$22,735,811.63	\$16,568,773.95	\$20,135,842.02	\$15,537,516.89	\$10,413,758.49	\$10,503,221.82
TRANSMISSION SERVICE	\$4,899,171.19	\$4,505,053.75	\$2,911,604.77	\$3,818,430.90	\$2,567,936.78	\$1,786,649.77	\$1,591,410.42
UPLIFT	\$168,858.13	\$355,494.00	\$56,799.82	\$56,035.30	\$139,180.00	\$39,989.11	\$27,762.27
RESIDUALS	(\$69,258.51)	\$247,114.23	\$420,226.39	(\$322,449.37)	(\$372,944.07)	(\$199,333.16)	(\$193,969.07)
ANCILLARY SERVICES	\$1,517,675.81	\$1,474,695.40	\$1,263,658.51	\$1,307,519.88	\$1,239,170.05	\$1,067,635.70	\$1,059,806.25
TCC	\$6,714,732.21	\$5,556,021.02	\$3,000,123.70	\$4,645,010.47	\$2,981,689.34	\$1,751,154.99	\$1,531,528.60
	27	28	29	30	31		
ENERGY	\$14,670,741.06	\$13,044,674.14	\$11,524,183.68	\$10,183,679.77	\$8,203,269.06		
TRANSMISSION SERVICE	\$2,071,499.50	\$1,858,942.42	\$1,549,785.28	\$1,252,083.50	\$985,128.54		
UPLIFT	\$14,712.41	\$21,310.93	\$14,555.69	\$6,058.98	\$11,727.51		
RESIDUALS	(\$356,217.57)	(\$294,964.09)	(\$296,240.00)	(\$319,189.67)	(\$296,571.21)		
ANCILLARY SERVICES	\$1,175,252.94	\$1,137,013.84	\$1,058,595.50	\$1,032,604.08	\$979,851.24		
TCC	\$1,732,731.08	\$1,501,240.75	\$898,882.31	\$512,927.19	\$186,821.09		



SETTLEMENTS REPORT  
December 2021 Settlement Adjustment  
January 10, 2022

Initial Settlement Adjustment – Market Costs Analysis

	MONDAY	TUESDAY	WEDNESDAY	THURSDAY	FRIDAY	SATURDAY	SUNDAY
			1	2	3	4	5
ENERGY			\$17,425,837.04	\$15,636,536.57	\$13,402,867.28	\$13,463,584.90	\$11,919,310.49
TRANSMISSION SERVICE			\$1,976,276.43	\$2,346,925.88	\$1,611,547.83	\$1,627,642.95	\$1,366,131.27
UPLIFT			\$190,988.98	\$45,679.49	\$19,080.14	\$122,354.41	\$8,466.88
RESIDUALS			(\$358,247.88)	(\$509,183.68)	(\$440,193.51)	(\$350,755.39)	(\$369,052.59)
ANCILLARY SERVICES			\$1,032,309.38	\$1,042,033.04	\$1,063,379.27	\$1,040,025.91	\$1,025,435.87
TCC			\$1,831,506.45	\$2,490,662.36	\$1,702,262.25	\$1,110,221.77	\$647,498.74
	6	7	8	9	10	11	12
ENERGY	\$13,059,255.03	\$14,603,129.00	\$17,703,721.99	\$20,708,796.71	\$14,803,983.51	\$10,170,534.93	\$8,636,308.49
TRANSMISSION SERVICE	\$1,820,835.16	\$1,378,051.41	\$1,618,665.14	\$2,463,053.57	\$1,688,557.17	\$1,322,105.76	\$1,498,066.73
UPLIFT	\$6,633.89	\$125,328.19	\$80,813.14	\$13,404.56	\$51,249.27	\$3,159.26	\$17,759.04
RESIDUALS	(\$361,860.62)	(\$457,834.40)	(\$373,835.81)	(\$341,724.39)	(\$343,161.48)	(\$373,894.35)	(\$209,332.90)
ANCILLARY SERVICES	\$1,058,149.86	\$1,011,737.00	\$1,121,334.99	\$1,149,022.16	\$1,118,643.94	\$1,023,266.09	\$1,016,042.54
TCC	\$1,343,722.59	\$492,984.55	\$1,031,323.11	\$2,636,116.57	\$1,247,123.78	\$869,727.65	\$1,437,243.90
	13	14	15	16	17	18	19
ENERGY	\$10,462,210.48	\$10,416,710.01	\$10,937,349.30	\$8,551,134.41	\$8,574,350.48	\$13,133,158.41	\$18,986,712.19
TRANSMISSION SERVICE	\$1,391,693.46	\$1,099,519.85	\$1,376,490.59	\$1,668,625.30	\$1,344,893.44	\$1,608,411.31	\$3,007,720.56
UPLIFT	\$41,617.18	\$32,640.61	\$34,088.59	\$6,208.13	\$233,738.00	\$15,654.31	\$24,872.45
RESIDUALS	(\$294,178.79)	(\$269,930.11)	(\$211,631.46)	(\$295,355.26)	(\$294,226.01)	(\$351,970.89)	(\$262,892.87)
ANCILLARY SERVICES	\$1,059,823.70	\$1,029,516.19	\$1,045,763.07	\$1,028,219.52	\$994,446.28	\$1,116,950.03	\$1,178,018.56
TCC	\$972,750.32	\$333,766.73	\$628,558.66	\$1,564,504.26	\$1,297,701.93	\$1,120,127.15	\$4,711,297.95
	20	21	22	23	24	25	26
ENERGY	\$24,529,480.84	\$22,735,845.27	\$16,554,604.97	\$20,139,319.19	\$15,546,812.21	\$10,419,426.39	\$10,511,373.45
TRANSMISSION SERVICE	\$4,899,171.13	\$4,505,069.11	\$2,911,236.21	\$3,818,646.04	\$2,568,520.33	\$1,787,015.80	\$1,591,778.28
UPLIFT	\$168,858.13	\$355,494.00	\$56,799.84	\$56,035.30	\$139,179.99	\$39,989.12	\$27,762.26
RESIDUALS	(\$69,258.78)	\$247,115.06	\$434,377.10	(\$321,170.95)	(\$368,588.28)	(\$199,411.91)	(\$193,980.92)
ANCILLARY SERVICES	\$1,517,675.76	\$1,474,711.24	\$1,263,354.43	\$1,307,734.11	\$1,239,783.62	\$1,068,012.85	\$1,060,185.29
TCC	\$6,714,732.21	\$5,556,021.02	\$3,000,123.70	\$4,645,010.47	\$2,981,689.34	\$1,751,154.99	\$1,531,528.60
	27	28	29	30	31		
ENERGY	\$14,680,219.66	\$13,052,078.98	\$11,531,624.78	\$10,189,458.22	\$8,196,154.31		
TRANSMISSION SERVICE	\$2,071,857.18	\$1,859,304.52	\$1,550,156.57	\$1,252,391.95	\$984,789.74		
UPLIFT	\$14,712.41	\$21,310.93	\$14,555.69	\$6,058.98	\$11,727.51		
RESIDUALS	(\$356,201.16)	(\$294,774.45)	(\$296,169.21)	(\$324,968.20)	(\$289,328.91)		
ANCILLARY SERVICES	\$1,175,621.49	\$1,137,388.64	\$1,058,978.33	\$1,032,858.52	\$979,529.39		
TCC	\$1,732,731.08	\$1,501,240.75	\$898,882.31	\$512,927.19	\$186,821.09		

